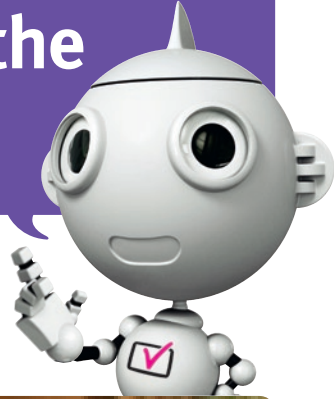


# You know the role TV plays in the lives of the people you care for

Switchover is coming and they could be left without television.



The Switchover Help Scheme is here to help those who may find it more difficult to switch to digital TV.

[helpscheme.co.uk](http://helpscheme.co.uk)

**BBC**

The Help Scheme is run by the BBC



The Help Scheme is run by the BBC. We help older and disabled people who may find it more difficult to switch to digital TV. We will install easy-to-use equipment and provide a simple demonstration of how it all works.

We are writing to all eligible people, they need to reply to us before we can help. We are doing all we can but not everyone will respond. **We need your help.**

Please follow these three simple steps and we'll do the rest:

**Check** if those you care for have any televisions which aren't yet ready for digital – do they have five channels or fewer?

**Consider** whether they are 75 or over, have lived in a care home for six months or more, are eligible for disability allowances or are registered blind or partially sighted.

**If the answer to both of these is yes, then:**

**Tell** them about the Help Scheme and either they can call us free on **0800 40 85 900**, or you can call on their behalf and we'll take care of the rest.

**Together we can make sure that those who rely on television the most are not left without it. Thank you.**